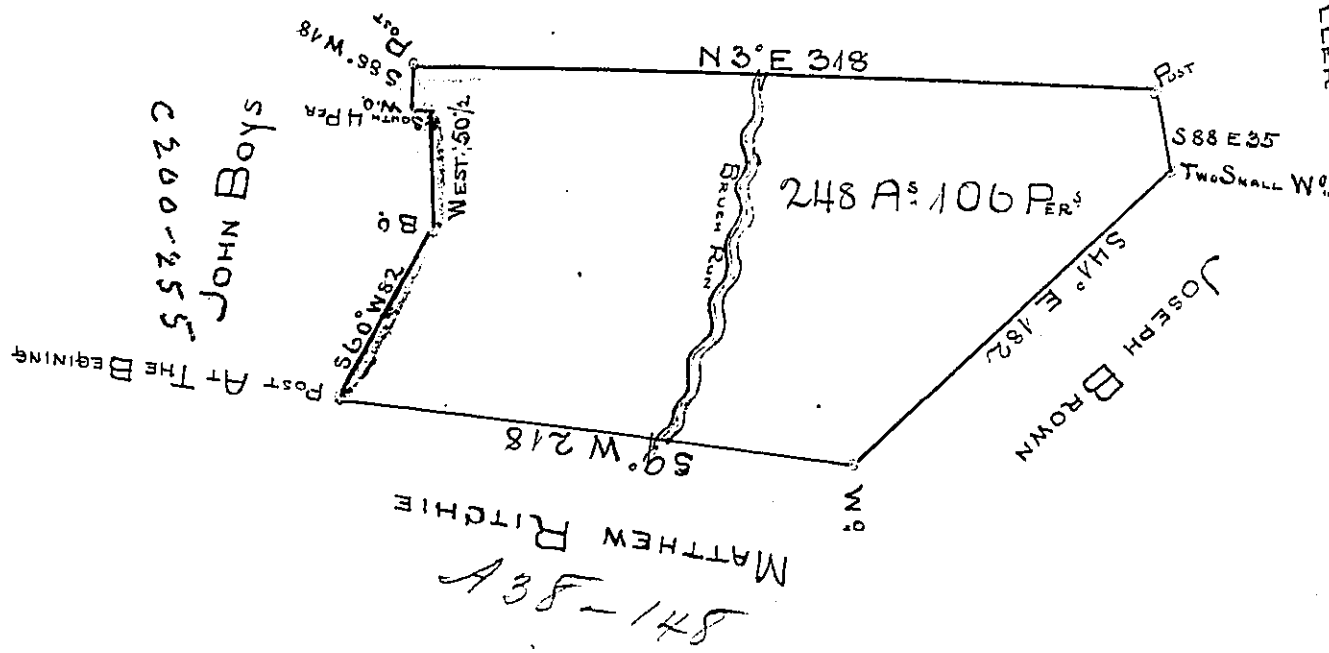


A38-149  
MATTHEW RITCHIE ESQUIRE

ROBERT MILLER



The above is a draught of a Survey Executed the 15<sup>th</sup> day of February  
 Anno domini 1795 In pursuance of a Warrant granted Matthew  
 Ritchie Esquire dated the 24<sup>th</sup> day of December Anno Domini 1794  
 Situated on the Waters of Chartiers Creek in Washington County  
 Containing two Hundred and forty Eight Acres and 106 perches  
 and allowance of Six per Cent for Roads

Thomas Stokely  
 S.S.

Daniel Brodhead Esquire  
 Surveyor General of Pennsylvania

IN TESTIMONY that the above is a copy of the original remaining on file in the  
 Department of Internal Affairs of Pennsylvania, made con-  
 formably to an Act of Assembly approved the 16th day of  
 February, 1833, I have hereunto set my Hand and caused  
 the Seal of said Department to be affixed at Harrisburg, this  
 Twenty Fourth day of August 1876

Wm. C. Candler  
 Secretary of Internal Affairs